





# G . R . A . C . E

Global Recruitment and Consultations in Education

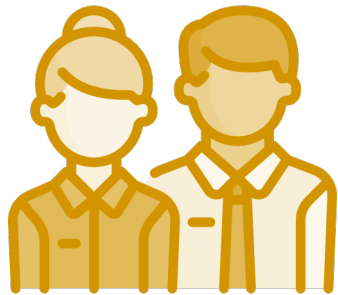
## G.R.A.C.E. RECRUITMENT TIERS (GRTs)

TIER			
T1- CANDIDATE	T2- PRE-VETTING	T3 - VETTING	T4- INTERVIEWING
			
T1- SERVICES PROVIDED	T2- SERVICES PROVIDED	T3- SERVICES PROVIDED	T4- SERVICES PROVIDED
G.R.A.C.E provides you with a candidate to carry out your recruitment processes	All T1 Services +	All T1 & T2 Services +	All T1, T2 & T3 Services +
	G.R.A.C.E. completes all <u>Initial</u> paperwork for Recruitment Process on behalf of you, including: <ul style="list-style-type: none"> <li>• Recruitment Forms</li> <li>• Adequate Training Check</li> <li>• Documentation Collection</li> </ul>	G.R.A.C.E. carries out the process of obtaining and completing all <u>Vetting</u> paperwork including: <ul style="list-style-type: none"> <li>• Due Diligence</li> <li>• Safeguarding</li> <li>• Police &amp; Child Protection Clearance</li> <li>• References</li> </ul>	G.R.A.C.E. carries out the following process of: <ul style="list-style-type: none"> <li>• Interviewing</li> <li>• Interviewing Paperwork</li> <li>• Interviewing Feedback to you &amp; recommendations</li> <li>• Communication with Candidate up until candidate offered Contract by you.</li> </ul>

# G.R.A.C.E

Global Recruitment and Consultations in Education

## G.R.A.C.E. RECRUITMENT CATEGORIES (GRCs) - EGYPT



C1

DUEL NATIONAL CANDIDATE

### Nationality:

- This candidate is a foreign National of Egyptian Origin
- This candidate holds a foreign passport
- This candidate may or may not have Egyptian identification.

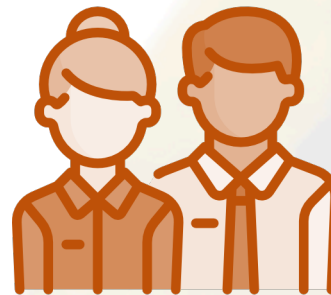


C2

EXPAT CANDIDATE

### Nationality:

- This candidate is a foreign National
- This candidate holds a foreign passport



C3

RESIDENT CANDIDATE

### Nationality:

- This candidate is an Egyptian National
- This candidate holds an Egyptian passport/identification holder

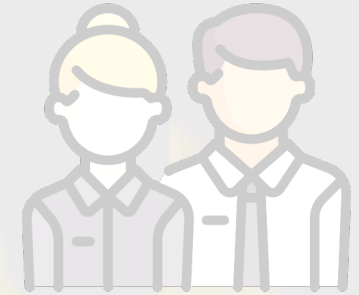


C4

MOE & LANGUAGES CANDIDATE

### Nationality:

- This candidate is an Egyptian National
- This candidate holds an Egyptian passport/identification holder







C5

MANAGER/DIRECTOR/ADMIN  
CANDIDATE

### Nationality:

- This candidate is an Egyptian National
- This candidate holds an Egyptian passport/identification holder

## G.R.A.C.E. RECRUITMENT GROUPS (GRGs) - EGYPT

STAFF RECRUITMENT GROUPS			
GROUP 1	GROUP 2	GROUP 3	GROUP 4
			
TEACHER QUALIFIED IN EDUCATION	TEACHER QUALIFIED IN RESPECTIVE FIELD	TEACHER PENDING QUALIFICATION IN EDUCATION	LEADER QUALIFIED
<p>This teacher is:</p> <ul style="list-style-type: none"> <li>• Qualified to teach <u>in their country</u></li> <li>• Qualified to teach <u>Internationally</u></li> <li>• A <u>holder</u> of QTS- Qualified Teacher Status or is an NQT- Newly Qualified Teacher.</li> </ul>	<p>This teacher is:</p> <ul style="list-style-type: none"> <li>• Qualified to teach in their respective field,</li> <li>• Qualified to teach Internationally</li> <li>• A <b>NON- holder</b> of QTS- Qualified Teacher Status</li> <li>• Can be an NQT- Newly Qualified Teacher.</li> </ul>	<p>This teacher is becoming:</p> <ul style="list-style-type: none"> <li>• Qualified to teach in their respective field,</li> <li>• Qualified to teach Internationally</li> </ul>	<p>This leader is:</p> <ul style="list-style-type: none"> <li>• Qualified in their respective field, albeit education or administration to lead the educational entity.</li> <li>• Qualified to lead in their country</li> <li>• Qualified to lead internationally</li> </ul>

# G.R.A.C.E

Global Recruitment and Consultations in Education

## G.R.A.C.E. RECRUITMENT MATRIX (GRGs) - EGYPT

RECRUITMENT CATEGORY	TIERS	STAFF RECRUITMENT GROUPS & RECRUITMENT FEES				
		GROUP 1 - TEACHER QUALIFIED IN EDUCATION	GROUP 2 - TEACHER QUALIFIED IN RESPECTIVE FIELD	GROUP 3 - TEACHER PENDING QUALIFICATION IN EDUCATION	GROUP 4 - QUALIFIED LEADER	
C1 DUEL NATIONAL CANDIDATE	T1	1 Month's Salary	1 Month's Salary	1 Month's Salary	1 Month's Salary	
	T2	1 Month's Salary + £100	1 Month's Salary + £100	1 Month's Salary + £100	1 Month's Salary + £100	
	T3	1 Month's Salary + £300	1 Month's Salary + £300		1 Month's Salary + £300	
	T4	1 Month's Salary + £500	1 Month's Salary + £500		1 Month's Salary + £500	
C2 EXPAT CANDIDATE	T1	1 Month's Salary	1 Month's Salary	1 Month's Salary	1 Month's Salary	
	T2	1 Month's Salary + £100	1 Month's Salary + £100	1 Month's Salary + £100	1 Month's Salary + £100	
	T3	1 Month's Salary + £300	1 Month's Salary + £300		1 Month's Salary + £300	
	T4	1 Month's Salary + £500	1 Month's Salary + £500		1 Month's Salary + £500	
C3 RESIDENT CANDIDATE	T1	1 Month's Salary	1 Month's Salary	1 Month's Salary	1 Month's Salary	
	T2	1 Month's Salary + EGP 2000	1 Month's Salary + EGP 2000	1 Month's Salary + EGP 2000	1 Month's Salary + EGP 2000	
	T3	1 Month's Salary + EGP 4000	1 Month's Salary + EGP 4000		1 Month's Salary + EGP 4000	
	T4	1 Month's Salary + EGP 5000	1 Month's Salary + EGP 5000		1 Month's Salary + EGP 5000	
C4 MOE & LANGUAGES CANDIDATE	T1	1 Month's Salary	1 Month's Salary		1 Month's Salary	
	T2	1 Month's Salary + EGP 2000	1 Month's Salary + EGP 2000		1 Month's Salary + EGP 2000	
	T3	1 Month's Salary + EGP 4000	1 Month's Salary + EGP 4000		1 Month's Salary + EGP 4000	
	T4	1 Month's Salary + EGP 5000	1 Month's Salary + EGP 5000		1 Month's Salary + EGP 5000	
C5 ANY ADMIN ROLES/ ADMIN/HR MANAGER/ DIRECTOR CANDIDATE	T1	1 Month's Salary	1 Month's Salary		1 Month's Salary	ADMIN RATES
	T2					
	T3					
	T4					